

A

B

C

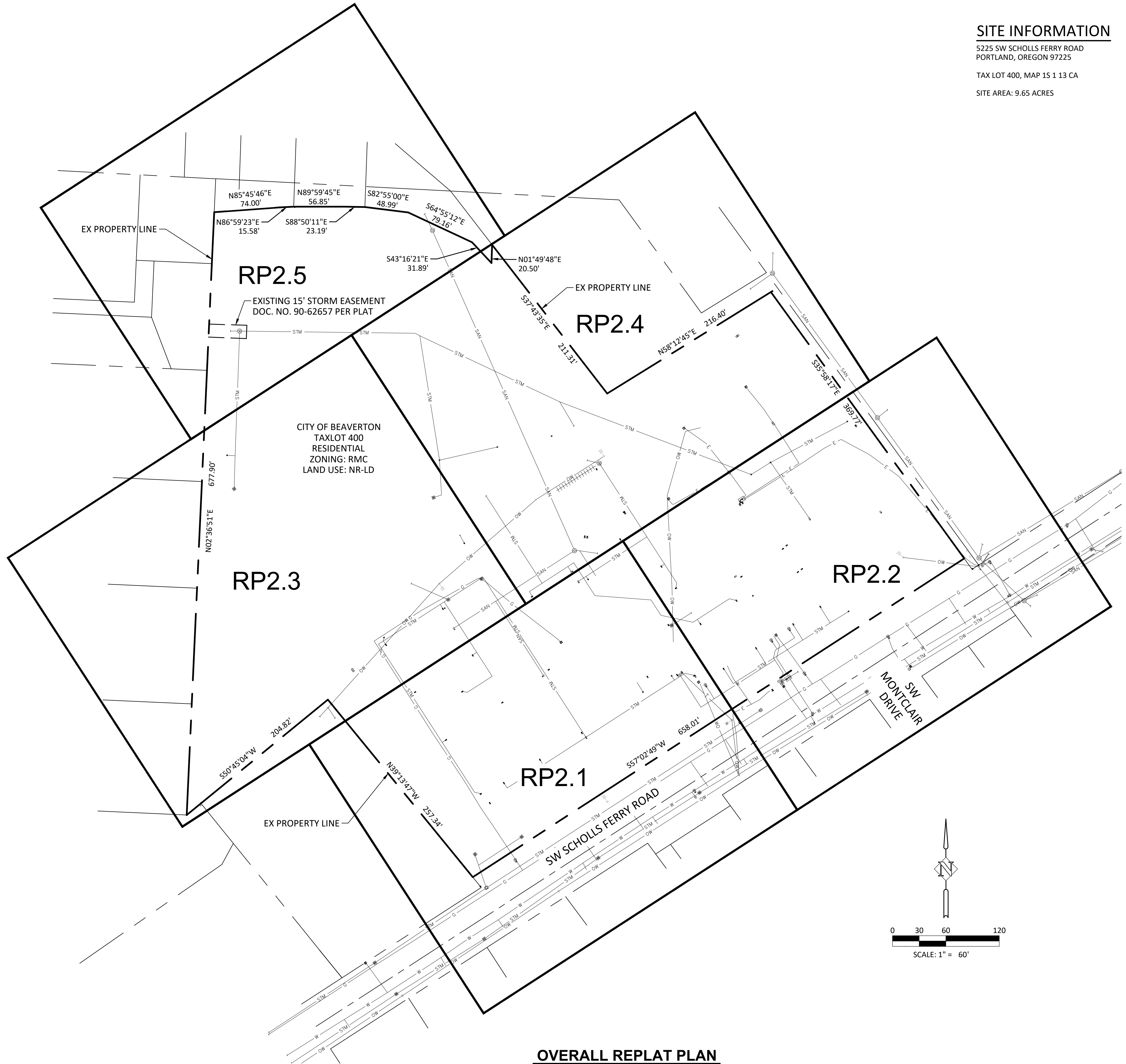
D

E

Received
Planning Division
08/31/2023

SITE INFORMATION

5225 SW SCHOLLS FERRY ROAD
PORTLAND, OREGON 97225
TAX LOT 400, MAP 15 1 13 CA
SITE AREA: 9.65 ACRES



OVERALL REPLAT PLAN

SCALE: 1" = 60'

Replat Plan.dwg
8/15/2022 8:52:05 AM



Harper Houf Peterson Righellis Inc.
ENGINEERS + PLANNERS
LANDSCAPE ARCHITECTS + SURVEYORS
3300 SW Jefferson Way, Portland, OR 97201
Phone: 503.238.1100 www.hfpr.com Fax: 503.238.1100

RALEIGH HILLS SCHOOL
BEAVERTON SCHOOL DISTRICT
5225 SW SCHOLLS FERRY ROAD
PORTLAND, OREGON 97225

LAND USE
SUBMITTAL
11.18.22
REVISIONS

Project Number
OVERALL REPLAT PLAN

RP1.0

A

B

C

D

E

1

2

3

4

MATCHLINE - SEE SHEET RP2.3

MATCHLINE - SEE SHEET RP2.4

MATCHLINE - SEE SHEET RP2.2

WASHINGTON COUNTY
TAXLOT 1002
RESIDENTIAL
ZONING: R-24

N39°13.47'W
257.34'

CITY OF BEAVERTON
TAXLOT 400
RESIDENTIAL
ZONING: RMC
LAND USE: NR-LD

S57°02'49"W 658.01'

SW SCHOLLS FERRY ROAD

WASHINGTON COUNTY
TAXLOT 2100
RESIDENTIAL
ZONING: R-5

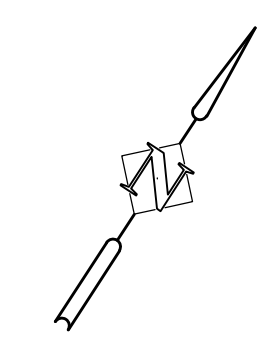
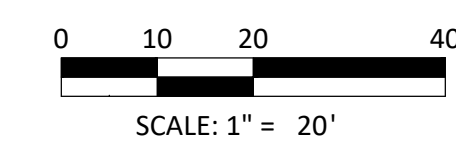
WASHINGTON COUNTY
TAXLOT 2000
RESIDENTIAL
ZONING: R-5

WASHINGTON COUNTY
TAXLOT 5500
RESIDENTIAL
ZONING: R-5

WASHINGTON COUNTY
TAXLOT 5400
RESIDENTIAL
ZONING: R-5

WASHINGTON COUNTY
TAXLOT 1800
RESIDENTIAL
ZONING: R-5

REPLAT PLAN
SCALE: 1" = 20'



Replat Plan.dwg
8/15/2022 8:52:05 AM



Harper Houf Peterson
Righellis Inc.

ENGINEERS + PLANNERS
LANDSCAPE ARCHITECTS + SURVEYORS

3300 NE Oregon Street, Suite 200, Clatskanie, OR 97105
Phone: 503.268.1100 www.hhpri.com Fax: 503.268.1100

RALEIGH HILLS SCHOOL
BEAVERTON SCHOOL DISTRICT

5225 SW SCHOLLS FERRY ROAD
PORTLAND, OREGON 97225

LAND USE
SUBMITTAL
11.18.22
REVISIONS

Project Number
REPLAT PLAN

RP1.1

A

B

C

D

E

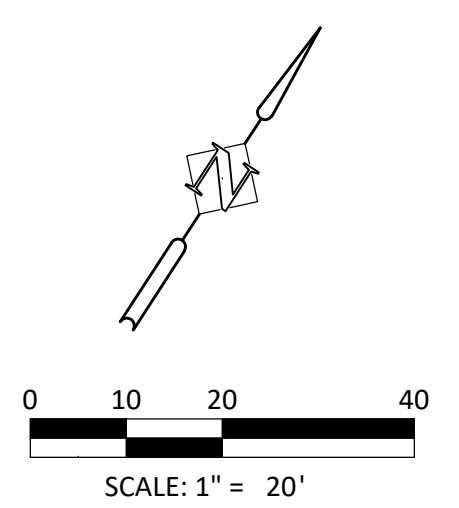
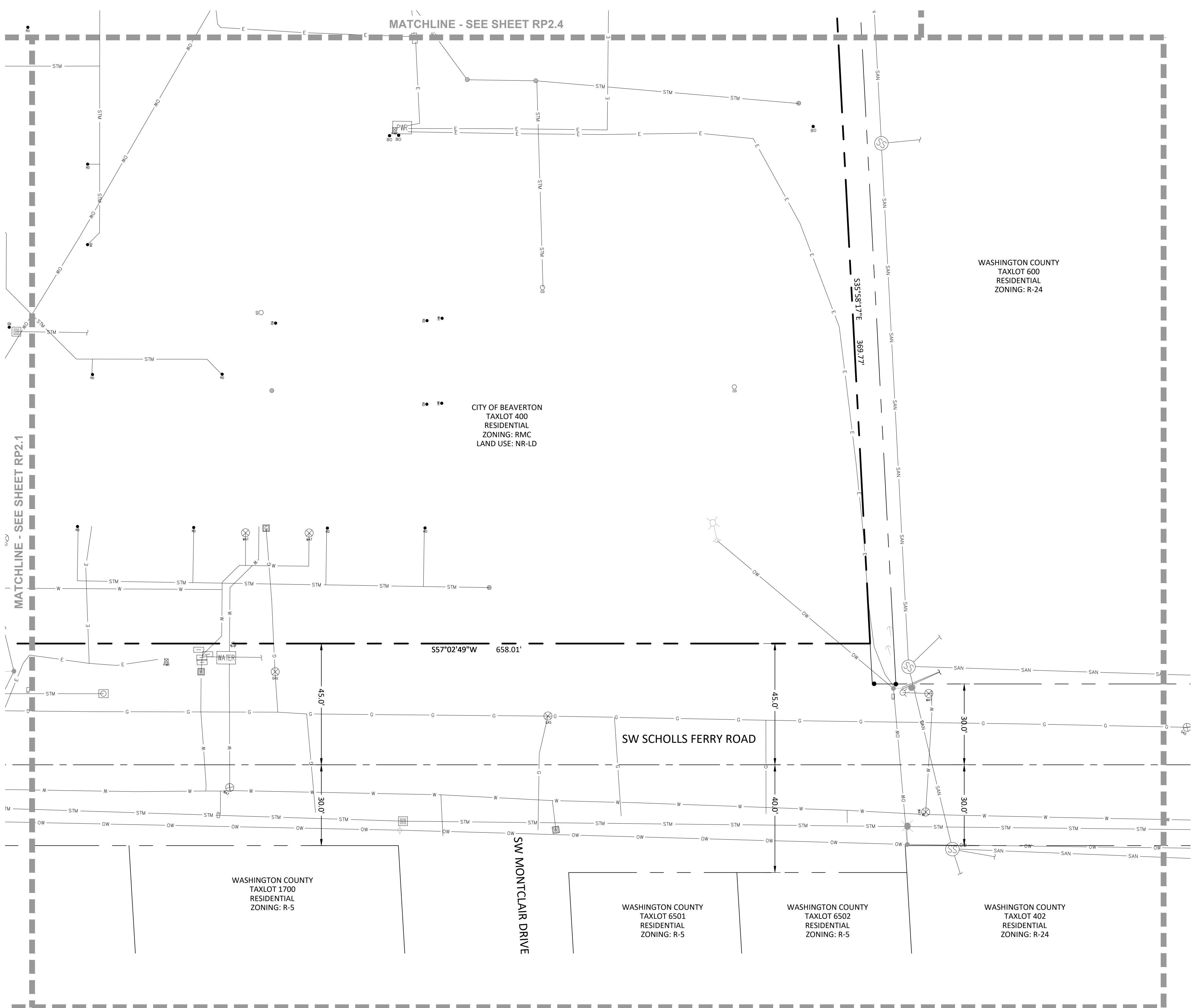
1

2

3

4

MATCHLINE - SEE SHEET RP2.4



REPLAT PLAN
SCALE: 1" = 20'

Replat Plan.dwg
8/15/2022 8:52:05 AM



Harper Houf Peterson Righellis Inc.
ENGINEERS + PLANNERS
LANDSCAPE ARCHITECTS + SURVEYORS
30055 Highway 101, Ste 200, Clatskanie, OR 97141
Phone: 503.268.1100 www.hfpr.com Fax: 503.268.1100

RALEIGH HILLS SCHOOL
BEAVERTON SCHOOL DISTRICT
5225 SW SCHOLLS FERRY ROAD
PORTLAND, OREGON 97225

LAND USE SUBMITTAL
11.18.22
REVISIONS

Project Number
REPLAT PLAN

RP1.2

A

B

C

D

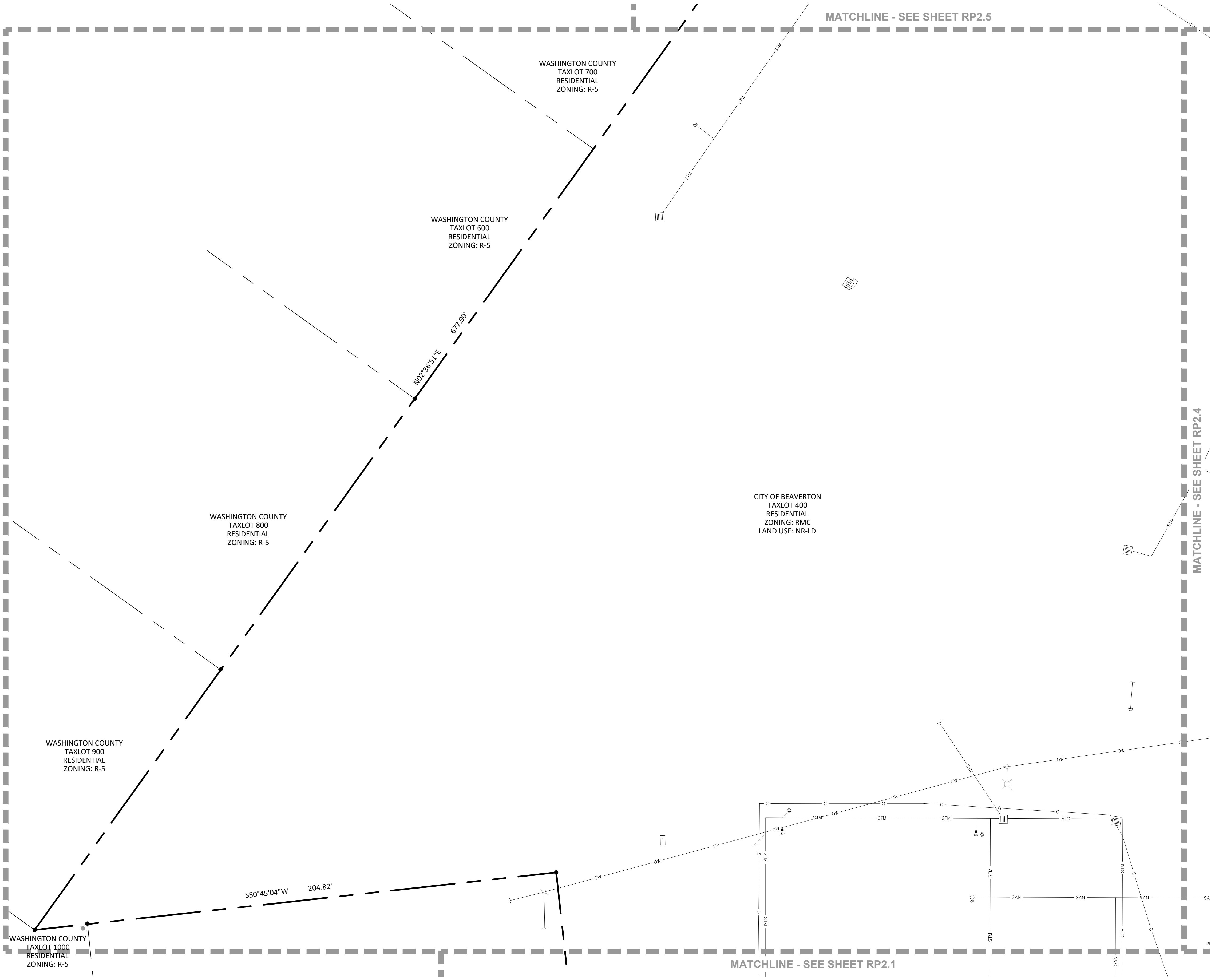
E

1

2

3

4

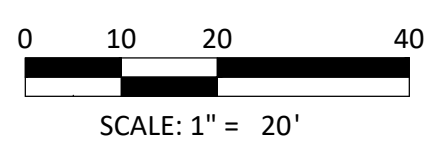


MATCHLINE - SEE SHEET RP2.5

MATCHLINE - SEE SHEET RP2.4

MATCHLINE - SEE SHEET RP2.1

REPLAT PLAN
SCALE: 1" = 20'



Replat Plan.dwg
8/15/2022 8:52:05 AM



Harper Houf Peterson Righellis Inc.
ENGINEERS + PLANNERS
LANDSCAPE ARCHITECTS + SURVEYORS
3300 NE Oregon Street, Suite 200, Clatskanie, OR 97105
Phone: 503.263.1100 www.hfpr.com Fax: 503.263.1100

RALEIGH HILLS SCHOOL
BEAVERTON SCHOOL DISTRICT
5225 SW SCHOLLS FERRY ROAD
PORTLAND, OREGON 97225

LAND USE SUBMITTAL
11.18.22
REVISIONS

Project Number
REPLAT PLAN

RP1.3

A

B

C

D

E

MATCHLINE - SEE SHEET RP1.5

MATCHLINE - SEE SHEET RP1.3

MATCHLINE - SEE SHEET RP1.1

MATCHLINE - SEE SHEET RP1.2

REPLAT PLAN

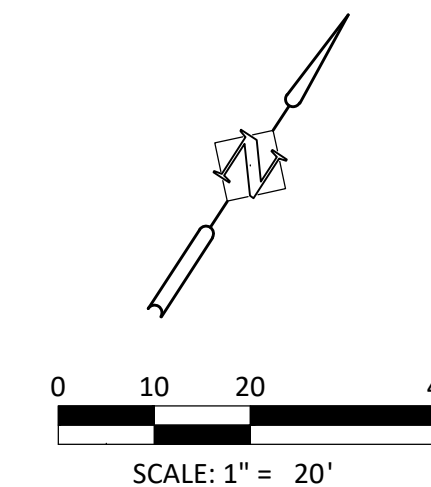
SCALE: 1" = 20'

WASHINGTON COUNTY
TAXLOT 300
RESIDENTIAL
ZONING: R-5

WASHINGTON COUNTY
TAXLOT 301
RESIDENTIAL
ZONING: R-5

WASHINGTON COUNTY
TAXLOT 600
RESIDENTIAL
ZONING: R-24

CITY OF BEAVERTON
TAXLOT 400
RESIDENTIAL
ZONING: RMC
LAND USE: NR-LD



Replat Plan.dwg
8/15/2022 8:52:05 AM



Harper
Houf Peterson
Righellis Inc.

ENGINEERS + PLANNERS
LANDSCAPE ARCHITECTS + SURVEYORS

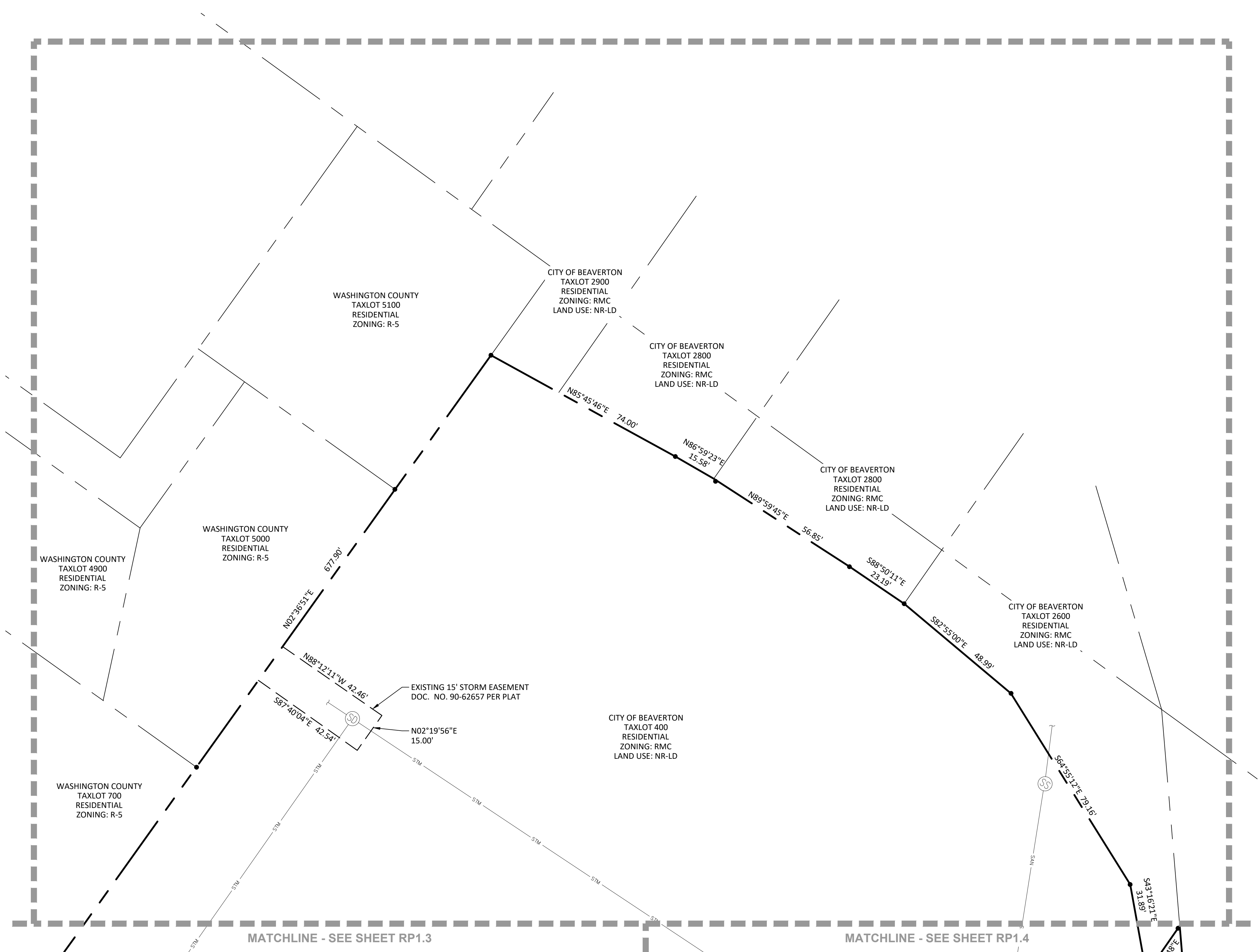
5225 SW SCHOLLS FERRY ROAD
PORTLAND, OREGON 97225
PHONE: 503.238.1100 WWW.HHPRI.COM FAX: 503.238.1100

RALEIGH HILLS SCHOOL
BEAVERTON SCHOOL DISTRICT

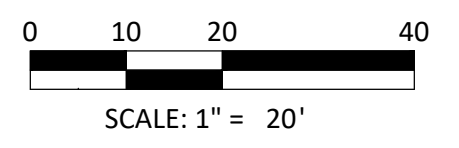
LAND USE
SUBMITTAL
11.18.22
REVISIONS

Project Number
REPLAT PLAN

RP1.4



REPLAT PLAN
SCALE: 1" = 20'



Harper Houf Peterson Righellis Inc.
ENGINEERS + PLANNERS
LANDSCAPE ARCHITECTS + SURVEYORS
3305 SW Holladay Avenue, Suite 200, Clatskanie, OR 97141
Phone: 503.268.1200 www.hfpr.com Fax: 503.268.1200

RALEIGH HILLS SCHOOL
BEAVERTON SCHOOL DISTRICT
5225 SW SCHOOLS FERRY ROAD
PORTLAND, OREGON 97225

LAND USE SUBMITTAL
11.18.22
REVISIONS

Project Number
REPLAT PLAN

RP1.5